

Multi-Camera Survey Solution

Available in HD, SD, IP Ethernet, and 4K configurations



*SubC DVRO, multiple cameras, LEDs, and lasers
combined with a simple user experience*

Key Features

- Easy to use - learn to operate in less than 1 hour
- Mature solution with industry backing. Reliable and high quality
- 6 channels of 4K, HD and SD video recorded on up to 12TB SSD
- 6 channels of overlay - dynamic graphics, text and logos
- Compatible with IP camera, SDI and composite video formats
- Cameras available with optical zoom
- Data logging with time-sync events

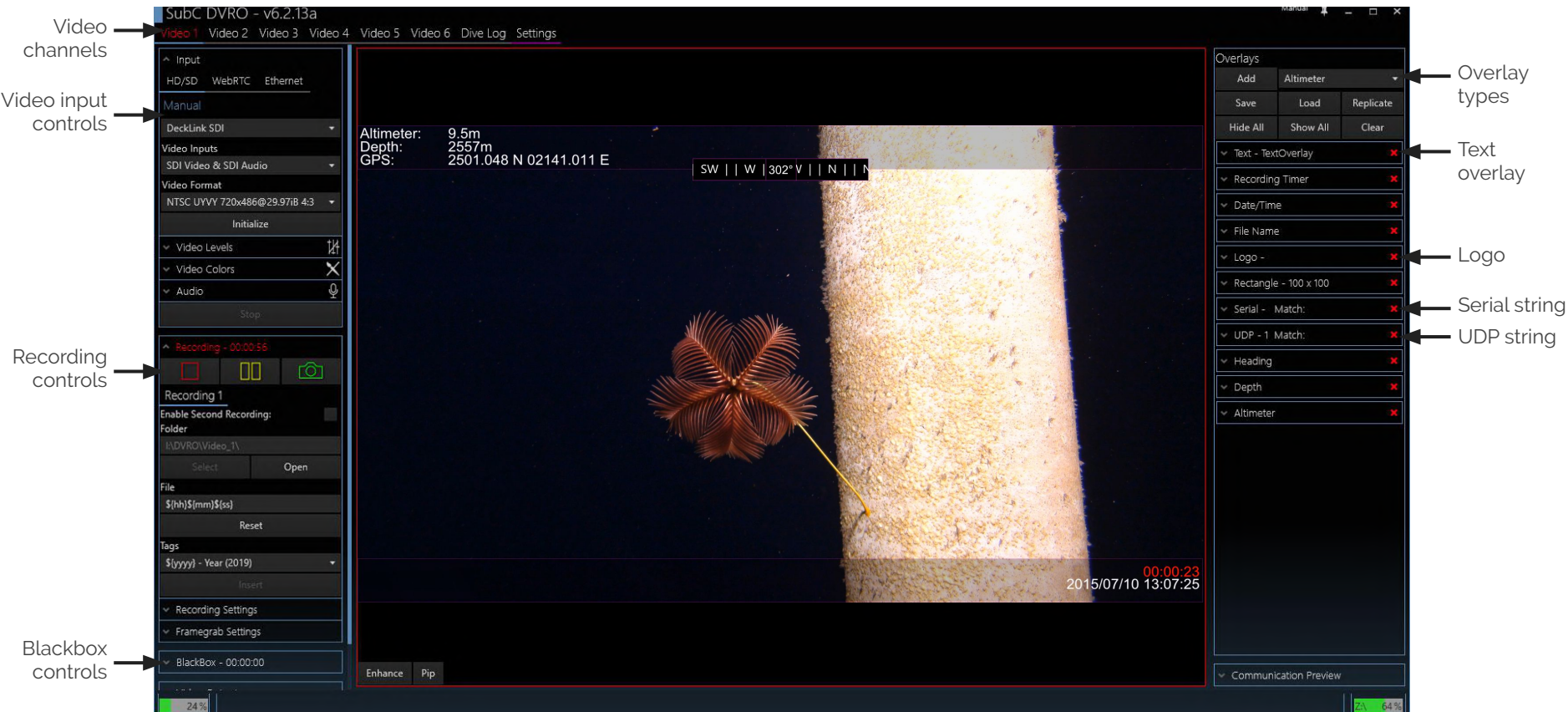


**Harshest Conditions.
Clearest Images.**

Since 2012, Ashtead Technology has carried the DVRO in their rental fleet. Ashtead stocks over 20 units, in the UK, US, UAE and Singapore for customers operating in every ocean.

Added Value Features

- 6 channel Client Viewer for LAN video streaming
- 6 channel Blackbox recording
- Real-time [image enhancement](#) (for water conditions with poor visibility)
- Built-in secure [VSAT video streaming](#)



The screenshot displays the SubC DVRO software interface, which is annotated with labels on the left and right sides. The central window shows a video feed of a diver's perspective, featuring a large, textured vertical object (possibly a rock or pipe) and a smaller, reddish-brown object (possibly a coral or rock formation) in the foreground. The video feed is overlaid with various data and controls.

Left-side annotations:

- Video channels:** Points to the top menu bar showing "Video 1" through "Video 6" and "Dive Log Settings".
- Video input controls:** Points to the left sidebar menu, including "Input" (HD/SD, WebRTC, Ethernet), "Manual", "DeckLink SDI", "Video Inputs", "SDI Video & SDI Audio", "Video Format", "Initialize", "Video Levels", "Video Colors", and "Audio".
- Recording controls:** Points to the "Recording" section in the left sidebar, including "Recording 1", "Enable Second Recording", "Folder", "File", "Tags", "Recording Settings", and "Framegrab Settings".
- Blackbox controls:** Points to the "BlackBox" section in the left sidebar, showing "BlackBox - 00:00:00".

Right-side annotations:

- Overlay types:** Points to the "Overlays" panel, which includes "Add", "Altimeter", "Save", "Load", "Replicate", "Hide All", "Show All", and "Clear".
- Text overlay:** Points to the "Text - TextOverlay" option in the overlays list.
- Logo:** Points to the "Logo -" option in the overlays list.
- Serial string:** Points to the "Serial - Match:" option in the overlays list.
- UDP string:** Points to the "UDP - 1 Match:" option in the overlays list.

Central Video Feed Data:

- Altimeter: 9.5m
- Depth: 2557m
- GPS: 2501.048 N 02141.011 E
- SW | | W | 302° V | | N | | R
- 00:00:23
- 2015/07/10 13:07:25

Bottom Panel:

- Enhance Pip
- 24%
- 64%

Real Clients. Real Projects. Real Results.



GEOMAR Helmholtz-Zentrum für Ozeanforschung Kiel

Friedrich Abegg & Dr. Peter Linke

GEOMAR

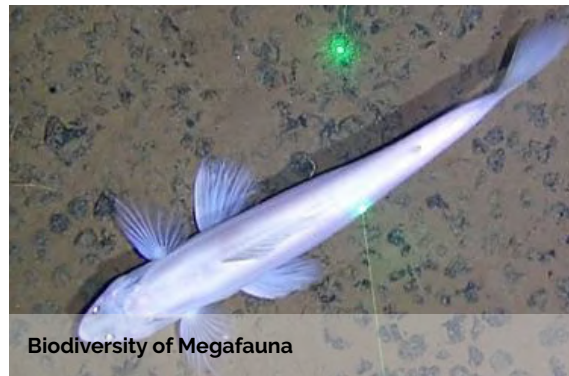
This study utilized SubC cameras within the ROV KIEL 6000, a deep-diving platform rated for depths of 6000 meters.



Expedition Report: 2017 Southeast Deep Coral Initiative (SEDCI) expedition aboard NOAA Ship Nancy Foster

Daniel Wagner, Morgan Kilgour & Peter Etnoyer
NOAA

With the ROV Odysseus on board, the NOAA ship Nancy Foster conducted 14 dives to explore deep-sea coral using SubC cameras.

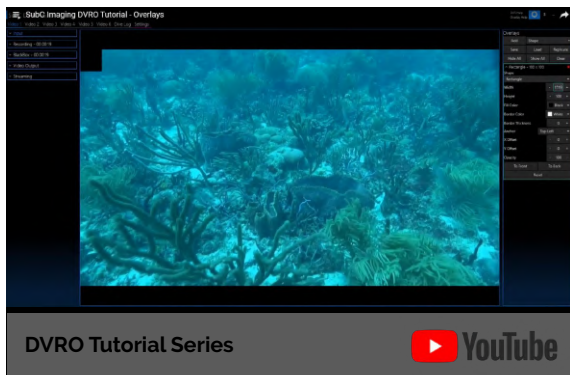


Insights into the abundance and diversity of abyssal megafauna in a polymetallic-nodule region in the eastern Clarion-Clipperton Zone

Amanda Ziegler, Diva Amon et al.
University of Hawaii

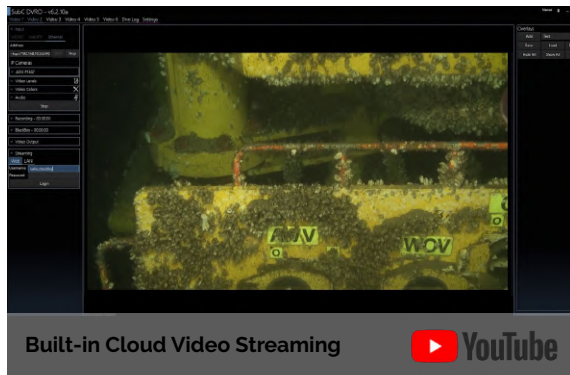
The University of Hawaii were the first to make estimates of abundance and diversity of megafauna when they used SubC cameras at four different sites.

Record 4K, HD & SD Video Clips with Overlay



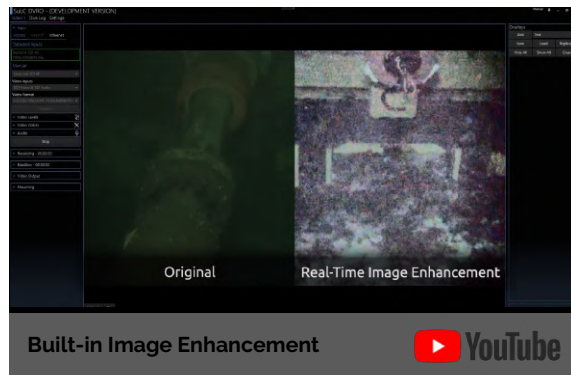
SubC DVR + Overlay

The DVRO is available in many video configurations to match your application. All common frame-rates and resolutions are supported. Custom combinations of input and output channels are available.



SubC Video Streaming

SubC Streaming is a cloud-based service that delivers high quality video and audio to your browser using WebRTC and the SubC DVRO. A username and password is all you need to log into SubC's secure server to view your footage in real time.



Real-time Image Enhancement

Real-time image enhancement is a feature that is now available with the SubC DVRO. This built-in tool will help operators get the job done quickly and efficiently by allowing them to clearly see the videos and stills they're capturing in real time.